

Ashtons



27 Barbican Mews YO10 5BZ

£1,100 Per Month

2



1



1

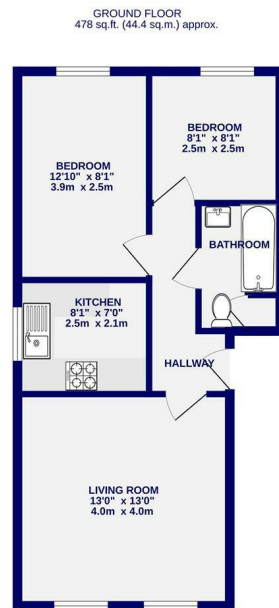


C



A two bedroom first floor apartment, just outside of the city walls with excellent access to the outer ring road and local transport links. Offered unfurnished the apartment comprises entrance hallway; spacious living room; modern kitchen with electric oven, hob, washer dryer and fridge freezer; double bedroom; single bedroom; bathroom with shower over bath. The apartment comes with one allocated parking space.

Available 24th March / Long Term Tenancy / Deposit £1200 / Council Tax Band B / EPC Rating C



TOTAL FLOOR AREA: 478 sq.ft. (44.4 sq.m.) approx.
While every attempt has been made to ensure the accuracy of the floorplan, measurements of rooms and any other areas are approximate. It is intended to give the proportions with very close to the actual. These are not intended to be used as a guide for any other purpose. The plan is for illustrative purposes only and should be used as such by any prospective purchaser. The contents, systems and appliances shown here are not intended and no guarantee as to their condition.



High Petergate Letters

01904 731404

lettings@ashtonsnet.com